



CONSOREM

CONSORTIUM DE RECHERCHE EN EXPLORATION MINÉRALE
MINERAL EXPLORATION RESEARCH CONSORTIUM

WWW.CONSOREM.CA

CONSORTIUM DE RECHERCHE EN EXPLORATION MINÉRALE
Université du Québec à Chicoutimi
555, boul. de l'Université, Chicoutimi, Qc - G7H 2B1
Tél.: (418) 545-5011 poste 5634 - Fax: (418) 545-5012
courriel: consorem@uqac.ca

What is CONSOREM ?

- Public private partnership in applied research for mineral exploration
- Synergy between companies, governments and universities
- A unique research structure under industry control

Objectives

- Development of technologies and knowledge applied to mineral exploration
- Development of mineral exploration models
- Donvey the knowledge towards the industry
- Training of highly qualified personnel in mineral exploration



CONSOREM'S RESEARCH: DEVELOPING EXPLORATION TOOLS

METHODOLOGICAL TOOLS

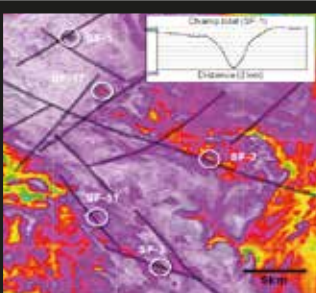
New methods developed or modified by CONSOREM. They are used in data treatments independently of the territory.

DECISION TOOLS

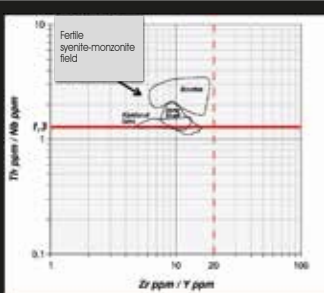
Allow more easily the integration, comparison and analysis of data to evaluate the mineral potential of a specified region.

TARGETING TOOLS

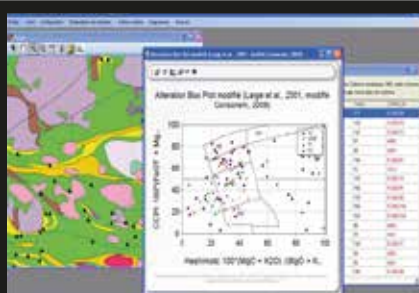
Result from the integration of different databases, and/or the acquisition of knowledge, which allow pre-competitive targeting on precise territories.



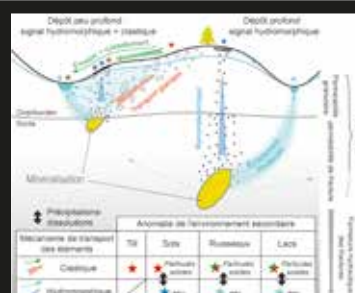
Typical magnetic signature associated with kimberlite



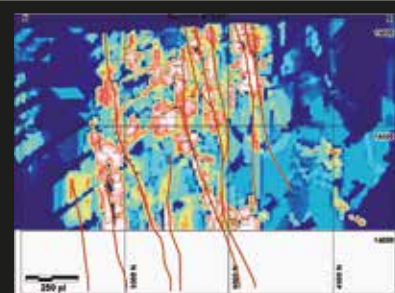
New diagram of favourability for gold mineralisation in the alkaline intrusions of the Abitibi



Consorem's lithogeochemical software



Schematic synthesis of metal transport in secondary environments



Paleostress section across the sigma deposit in the Val-d'Or area

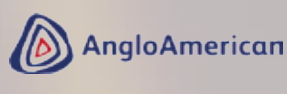
OUR MISSION: CONTRIBUTE TO THE SUCCESS OF THE MINERAL EXPLORATION INDUSTRY

MEMBERS

Governments



Industries



Universities



CONSOREM ORGANIZATION

